

DRAWING NUMBER 15121 REV -

Tolerance unless noted .000 ±.005 .00 ±.01 Fract ±1/16		Manufacturing Solutions, Inc. 9485 College St, Beaumont, Texas		
Assembly Title				
ASSEMBLY, 440V, 5HP, WJ FREQ DRIVE				
C3A CHAMFER MACHINE				
DRAWING SIZE B	SCALE 1:10	SHEET 1 of 4	DO NOT SCALE DRAWING	ALL DIMENSIONS IN INCHES
DRAWN BY JC	APPR BY	DATE 6/25/12	DRAWING NUMBER 15121	REV -

THIS PRINT IS THE PROPERTY OF MANUFACTURING SOLUTIONS, INC. THE INFORMATION CONTAINED HEREIN IS CONFIDENTIAL AND MAY NOT BE USED, DIVULGED, COPIED, NOR REPRODUCED WITHOUT THE EXPRESS WRITTEN PERMISSION OF MANUFACTURING SOLUTIONS, INC.

REVISIONS			
REV.	DESCRIPTION	DRAWN BY	DATE

ITEM NO.	PART NUMBER	DESCRIPTION	QTY.
1	11783	BASE WELDMENT	1
2	11779	TOP PLATE	1
3	12113	VICE RETAINER	2
4	12118	VICE CENTER	1
5	11781	SPINDLE HOUSING	1
6	11804	FEED CYLINDER TOWER	1
7	10927	REAR BEARING TOWER	1
8	12081	REAR BRNG TOWER, SWITCH MNT	1
9	M10317	BALL BEARING, RADIAL	1
10	M10319	BEARING	2
11	12066	SPINDLE	1
12	M10323	LOCKWASHER	1
13	M10325	LOCKWASHER	1
14	M10322	LOCKNUT, N09	1
15	M10320	SEAL	1
16	M10313	DOUBLE ACTING SINGLE ROD/TIE ROD	1
17	11350	SPACER	1
18	11821	LIMIT SWITCH BRACKET	1
19	M10327	SK BUSHING, 2.250" BORE	1
20	M10710	SPROCKET, 64 TEETH	1
21	M10565	CYLINDER	1
22	M10253	PLASTIC HANDLE	1
23	M10570	MANIFOLD, 3 STATION	1
24	M10571	FILTER/REGULATOR/LUBRICATOR	1
25	M10572	PRESSURE RELIEF VALVE	1
26	11791	HEAD GUARD, FIXED	1
27	11789	HEAD COVER, HINGED	1
28	M10488	HINGE	1
29	M10566	PLASTIC KNOB	1
30	11795	STOP ROD	1
31	11796	STOP ROD BRACKET	1
32	M10757	VALVE, SINGLE SOLENOID	2
33	M10055	PRESSURE SWITCH, PNEUMATIC	1
34	M10686	FLOW CONTROL, STACKABLE	1
35	M10764	FITTING, 3/8 TUBE TO 1/4 NPT	2
36	M10762	90 DEG STREET ELBOW, NPTF, 1/8"	2
37	M10763	1/4" NPT HEX NIPPLE	2
38	M10767	1/4" NPT PLUG, SOCKET HEAD	8
39	M10766	1/8" NPT PLUG, SOCKET HEAD	5
40	M10765	90 DEG ECONO ELBOW, NPTF, 1/4"	1
41	M10773 Rail	LINEAR RAIL	2
42	M10773 Bearing	LINEAR BEARING	4
43	M10771	SH BUSHING, 1.125" BORE	1
44	M10772	SPROCKET, 36 TEETH	1
45	M10120	LABEL, EYE PROTECTION	1
46	M10121	LABEL, HIGH VOLTAGE	1
47	M10122	LABEL, GUARDS	1
48	M10774	TIMING BELT	1
49	11820	LIMIT SWITCH BRACKET	1
50	12552	FRONT BEARING ASSEMBLY	1
51	12610	BEARING CAP	1
52	12106	ADJUSTMENT KNOB	1
53	M10564	CHECK NUT	2
54	HNUT 0.3750-16-D-N		5
55	13201	HYDRABRAKE	1
56	12698	7/16-20 UNF THREADED ROD	1
57	M11639	HEX REDUCER BUSHING, 1/4 NPT TO 1/8 NPT	1
58	12798	SPACER, NOSE MOUNT CYLINDER	1
59	12699	7/16-20 COUPLING NUT	1
60	M10324	LOCKNUT	1
61	13157	TOP COVER	1
62	M11300	HEX REDUCER BUSHING, 3/8NPT TO 1/4NPT	2
63	M10797	MOTOR BASE	1
64	M10309	MOTOR, 240/480, 3 PHASE, 5HP	1
65	15120	ELECTRICAL ASSEMBLY, 440VAC, 5HP, WJ FREQ DRIVE	1

ITEM NO.	PART NUMBER	DESCRIPTION	QTY.
66	12067	COUPLING, REAR DRIVE	1
67	11806	SIDE PANEL	1
68	11038	COLLET RACK	1
69	11037	SHAVING DRAWER	1
70	12144	COLLETS (SOLD SEPARATELY)	1
71	11807	REAR PANEL	1
72	M10255	LIMIT SWITCH	3
73	M10759	1/4" AIR COUPLING, QUICK DISCONNECT, 3/8 NPT	1
74	M10766	PNEUMATIC MUFFLER, 1/8" NPT	2
75	M10767	PNEUMATIC MUFFLER, 1/4" NPT	2
76	15852	MOUNT, CASTER	4
77	M11890	CASTER, SWIVEL, 3"	4
78	M11891	BRAKE KIT, CASTER	2
79	12116	WISE, SLIDE STOP	1
80	14481	TOOL RACK, FORMED	1
81	M10950	GREASE ZERK, 1/4-28UNF	2
82	SBHCSCREW 0.25-20x0.5-HX-N		31
83	HNUT 0.2500-20-D-N		5
84	Regular LW 0.5		4
85	HX-SHCS 0.5-13x3.75x1.5-N		4
86	M11031	HARDENED WASHER	11
87	HX-SHCS 0.375-16x1.25x1.25-N		27
88	HX-SHCS 0.3125-24x1x1-N		4
89	M11317	BLACK-OXIDE STEEL THICK FLAT WASHER, 1/4"	2
90	HX-SHCS 0.25-20x0.75x0.75-N		2
91	M11253	HARDENED WASHER, 5/16	4
92	HX-SHCS 0.3125-18x1.25x1.25-N		4
93	HX-SHCS 0.3125-18x1x1-N		2
94	M11153	NYLOC HEX NUT, 5/16-18UNC	2
95	HX-SHCS 0.3125-18x0.75x0.75-N		2
96	14843	ASSEMBLY, CHAMFER HEAD	1
97	B18.3.1M - 8 x 1.25 x 30 Hex SHCS -- 30NHX		16
98	HX-SHCS 0.19-24x0.625x0.625-N		6
99	M10766	1/8" NPT PLUG, SOCKET HEAD	1
100	HX-SHCS 0.25-20x3.5x1-N		1
101	HX-SHCS 0.5-13x1.25x1.25-N		4
102	HNUT 0.5000-13-D-N		4
103	Preferred Narrow FW 0.375		4
104	HX-SHCS 0.375-16x1x1-N		4
105	Preferred Narrow FW 0.3125		2
106	HNUT 0.3125-18-D-N		2
107	M10957	NYLON INSERT HEX NUT, 3/8-16	16
108	Preferred Narrow FW 0.375		32

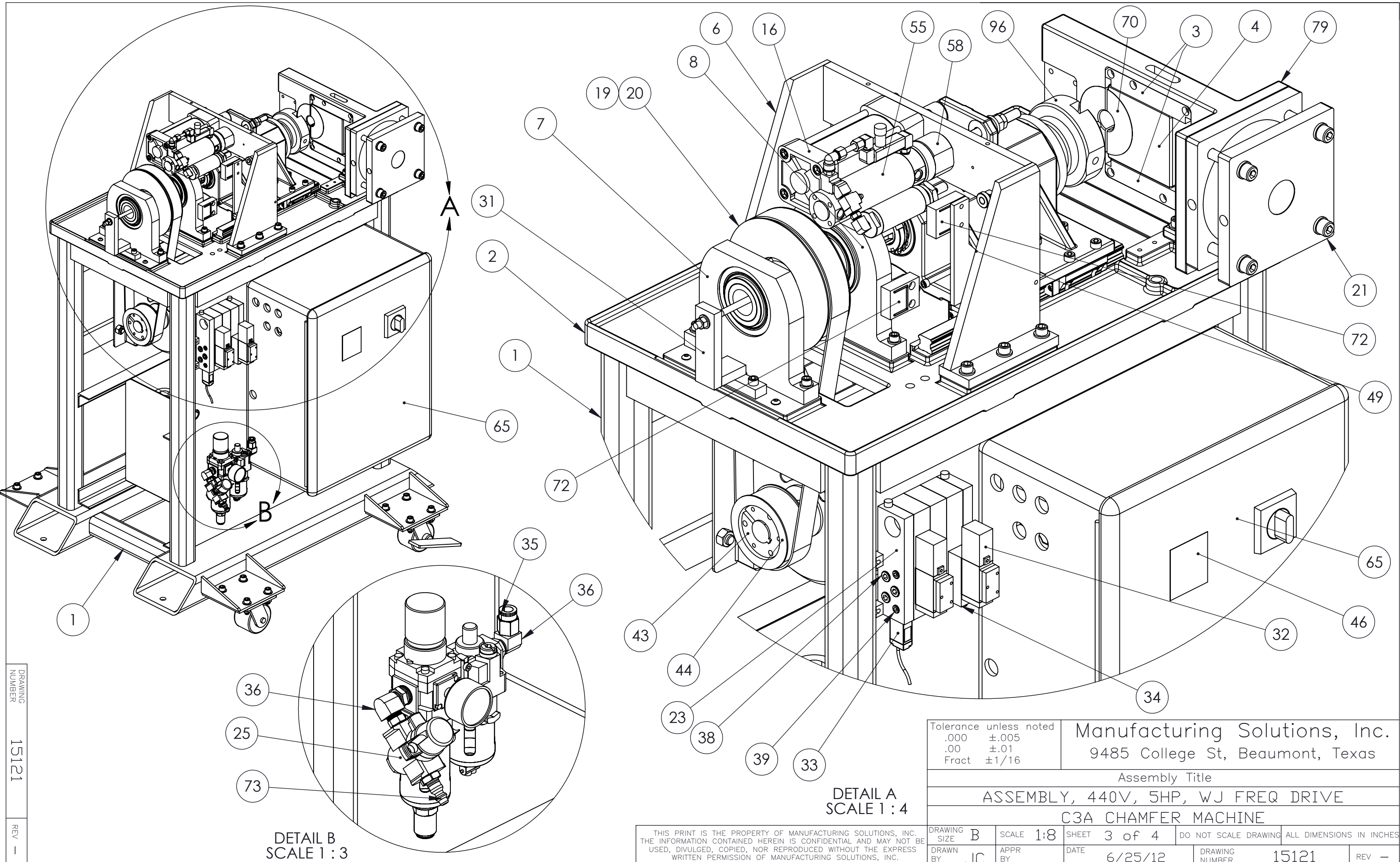
Tolerance unless noted
.000 ±.005
.00 ±.01
Fract ±1/16

Manufacturing Solutions, Inc.
9485 College St, Beaumont, Texas

DRAWING NUMBER

THIS PRINT IS THE PROPERTY OF MANUFACTURING SOLUTIONS, INC. THE INFORMATION CONTAINED HEREIN IS CONFIDENTIAL AND MAY NOT BE USED, DIVULGED, COPIED, NOR REPRODUCED WITHOUT THE EXPRESS WRITTEN PERMISSION OF MANUFACTURING SOLUTIONS, INC.

DRAWING SIZE B	SCALE 1:10	SHEET 2 of 4	DO NOT SCALE DRAWING	ALL DIMENSIONS IN
DRAWN BY	APPR BY	DATE	DRAWING NUMBER	REV



DRAWING NUMBER 15121

REV -

DETAIL B
SCALE 1 : 3

DETAIL A
SCALE 1 : 4

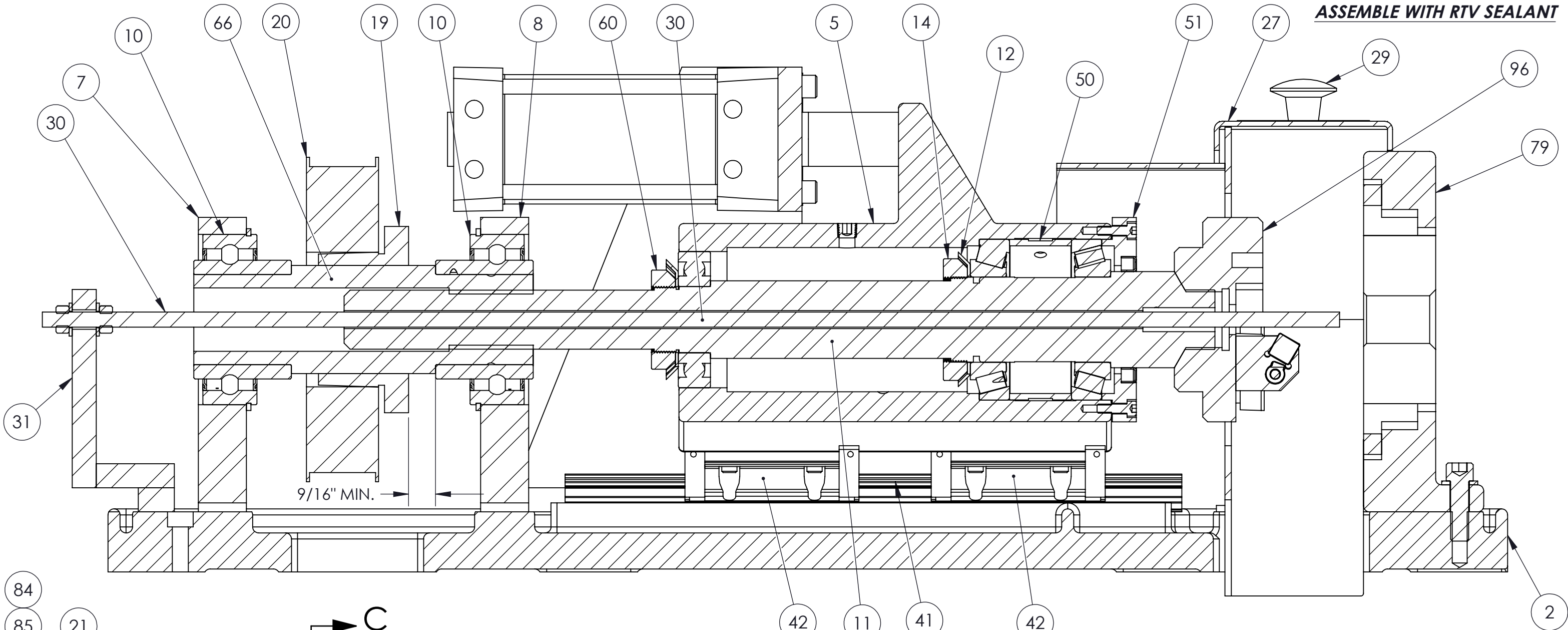
Tolerance unless noted	
.000	±.005
.00	±.01
Fract	±1/16

Manufacturing Solutions, Inc.
9485 College St, Beaumont, Texas

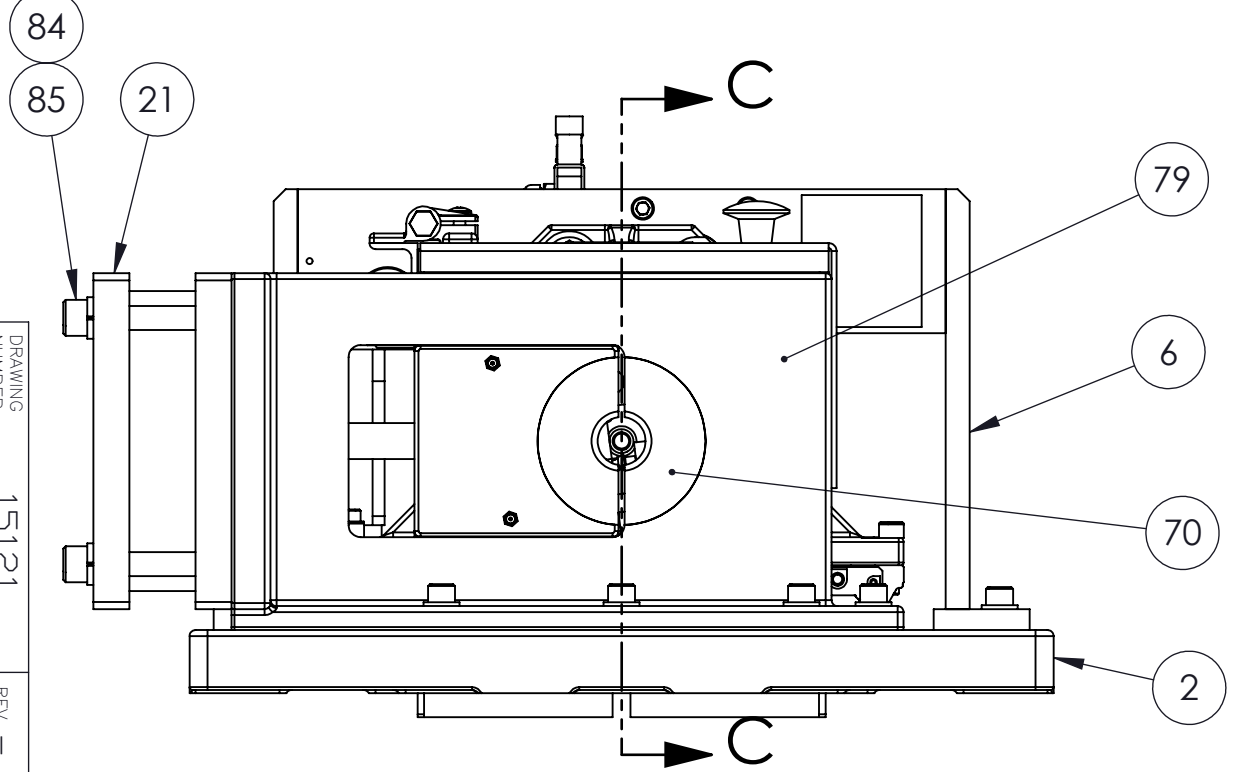
Assembly Title					
ASSEMBLY, 440V, 5HP, WJ FREQ DRIVE					
C3A CHAMFER MACHINE					
DRAWING SIZE	SCALE	SHEET	DO NOT SCALE DRAWING	ALL DIMENSIONS IN INCHES	
B	1:8	3 of 4			
DRAWN BY	APPR BY	DATE	DRAWING NUMBER	REV	
JC		6/25/12	15121	-	

THIS PRINT IS THE PROPERTY OF MANUFACTURING SOLUTIONS, INC. THE INFORMATION CONTAINED HEREIN IS CONFIDENTIAL AND MAY NOT BE USED, DIVULGED, COPIED, NOR REPRODUCED WITHOUT THE EXPRESS WRITTEN PERMISSION OF MANUFACTURING SOLUTIONS, INC.

ASSEMBLE WITH RTV SEALANT



SECTION C-C
SCALE 1:2



Tolerance unless noted	
.000	±.005
.00	±.01
Fract	±1/16

Manufacturing Solutions, Inc.
9485 College St, Beaumont, Texas

Assembly Title				
ASSEMBLY, 440V, 5HP, WJ FREQ DRIVE				
C3A CHAMFER MACHINE				
DRAWING SIZE	SCALE	SHEET	DO NOT SCALE DRAWING	ALL DIMENSIONS IN INCHES
B	1:4	4 of 4		
DRAWN BY	APPR BY	DATE	DRAWING NUMBER	REV
JC		6/25/12	15121	-

THIS PRINT IS THE PROPERTY OF MANUFACTURING SOLUTIONS, INC. THE INFORMATION CONTAINED HEREIN IS CONFIDENTIAL AND MAY NOT BE USED, DIVULGED, COPIED, NOR REPRODUCED WITHOUT THE EXPRESS WRITTEN PERMISSION OF MANUFACTURING SOLUTIONS, INC.

DRAWING NUMBER
15121

REV -