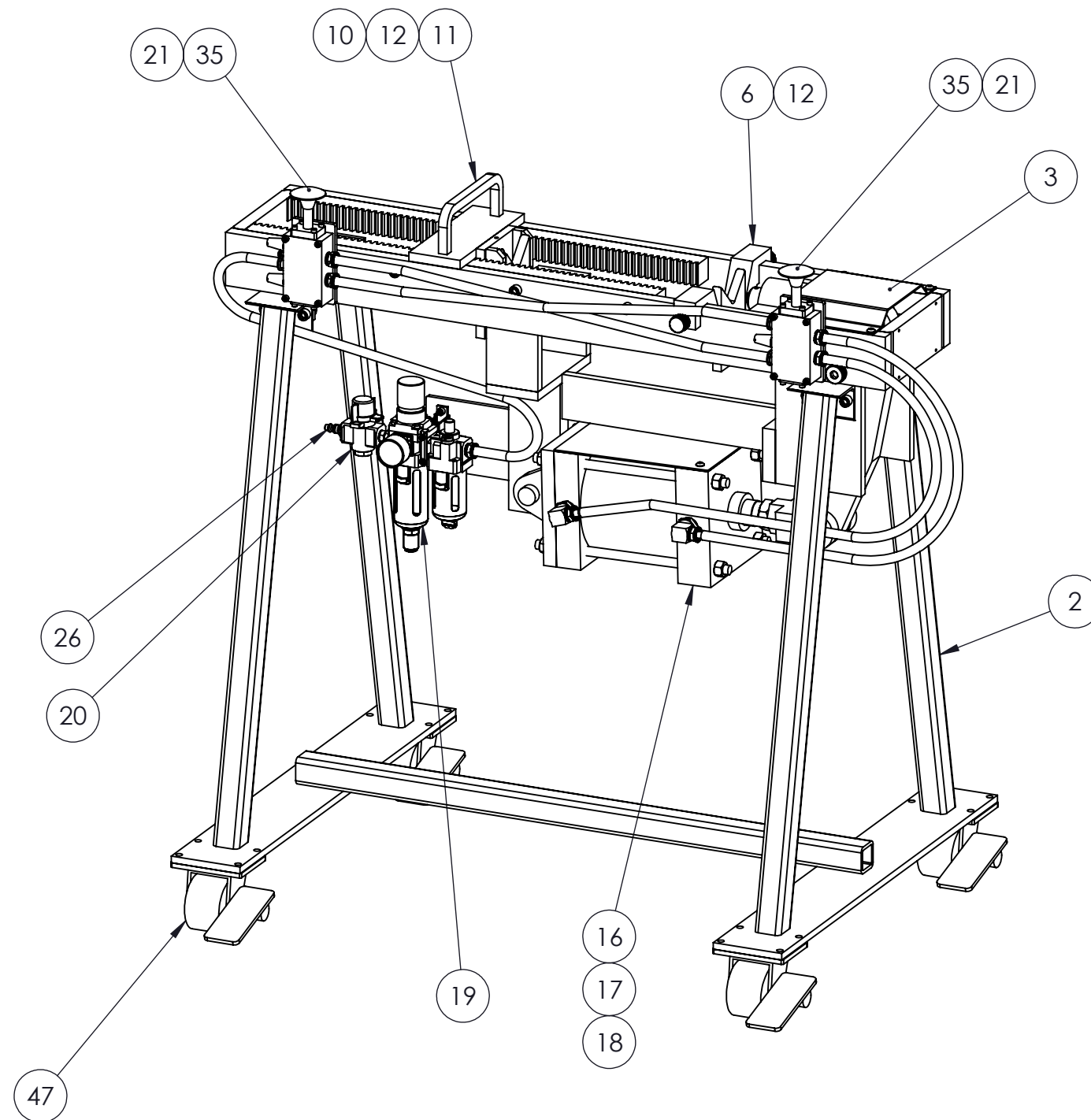


ITEM NO.	PART NUMBER	DESCRIPTION	Default/QTY.
1	11427	WELDMENT, FRAME	1
2	16735	WELDMENT, FRAME, FOR CASTERS	1
3	11432	GUARD, TOP	1
4	11433	GUARD, CYLINDER, TOP	1
5	11434	PLUNGER	1
6	11438	FRONT SUPPORT	1
7	11443	PIVOT PIN	2
8	11445	SIDE PLATE	2
9	11446	BLANK, MARKING INSERT, 1/2" DIA x 1"	1
10	11447	BLANK, BACKSTOP MARKER	1
11	10893	BACKSTOP	1
12	11444	V-SUPPORT	2
13	10345	WELDMENT, PIVOT ARM	1
14	10530	RACK GEAR	2
15	M10370	SHOULDER BOLT 3/4" DIA X 8"	1
16	M10137	PNEU. CYL. 6" BORE X 4" STROKE, MAG PISSTON	1
17	M10182	ROD CLEVIS, 1"-14	1
18	M10183	PIVOT PIN	1
19	M10571	FILTER/REGULATOR/LUBRICATOR	1
20	M10572	PRESSURE RELIEF VALVE	1
21	11442	VALVE MOUNT	2
22	M10372		2
23	M11189	LOCKNUT, 5/8-11UNC	1
24	M11300	HEX REDUCER BUSHING, 3/8NPT TO 1/4NPT	1
25	M10763	1/4" NPT HEX NIPPLE	1
26	M10759	1/4" AIR COUPLING, QUICK DISCONNECT, 3/8 NPT	1
27	HX-SHCS 0.375-16x1.25x1.25-N		14
28	SCHCSREW 0.25-20x0.75x0.75-HX-N		4
29	M10957	NYLON INSERT HEX NUT, 3/8-16	8
30	SBHCSCREW 0.25-20x0.5-HX-N		6
31	M10779	NYLOC HEX NUT, 1/4-20UNC	2
32	HX-SHCS 0.25-20x1x1-N		2
33	M11220	HEX REDUCER BUSHING, 3/4NPT TO 3/8NPT	2
34	M11079	STREET ELBOW, 3/8NPT	2
35	M10369	PALM VALVE	2
36	HX-SHCS 0.19-24x1.625x1.25-N		8
37	M11156	PUSH ON HOSE FITTING, 3/8"NPT	10
38	M10610	MUFFLER, 3/8" NPT	3
39	M10950	GREASE ZERK, 1/4-28UNF	2
40	HX-SHCS 0.375-16x1x1-N	HX-SHCS 0.375-16x1x1-N	4
41	SMM-24 HOSE-1	3/8" AIR LINE	1
42	SMM-24 HOSE-2	3/8" AIR LINE	1
43	SMM-24 HOSE-3	3/8" AIR LINE	1
44	SMM-24 HOSE-4	3/8" AIR LINE	1
45	SMM-24 HOSE-5	3/8" AIR LINE	1
46	Preferred Narrow FW 0.375		2
47	M11032	SWIVEL CASTER WITH BRAKE	4

REVISIONS			
REV.	DESCRIPTION	BY	DATE
A	REDRAWN IN SOLIDWORKS	JC	12/17/2013



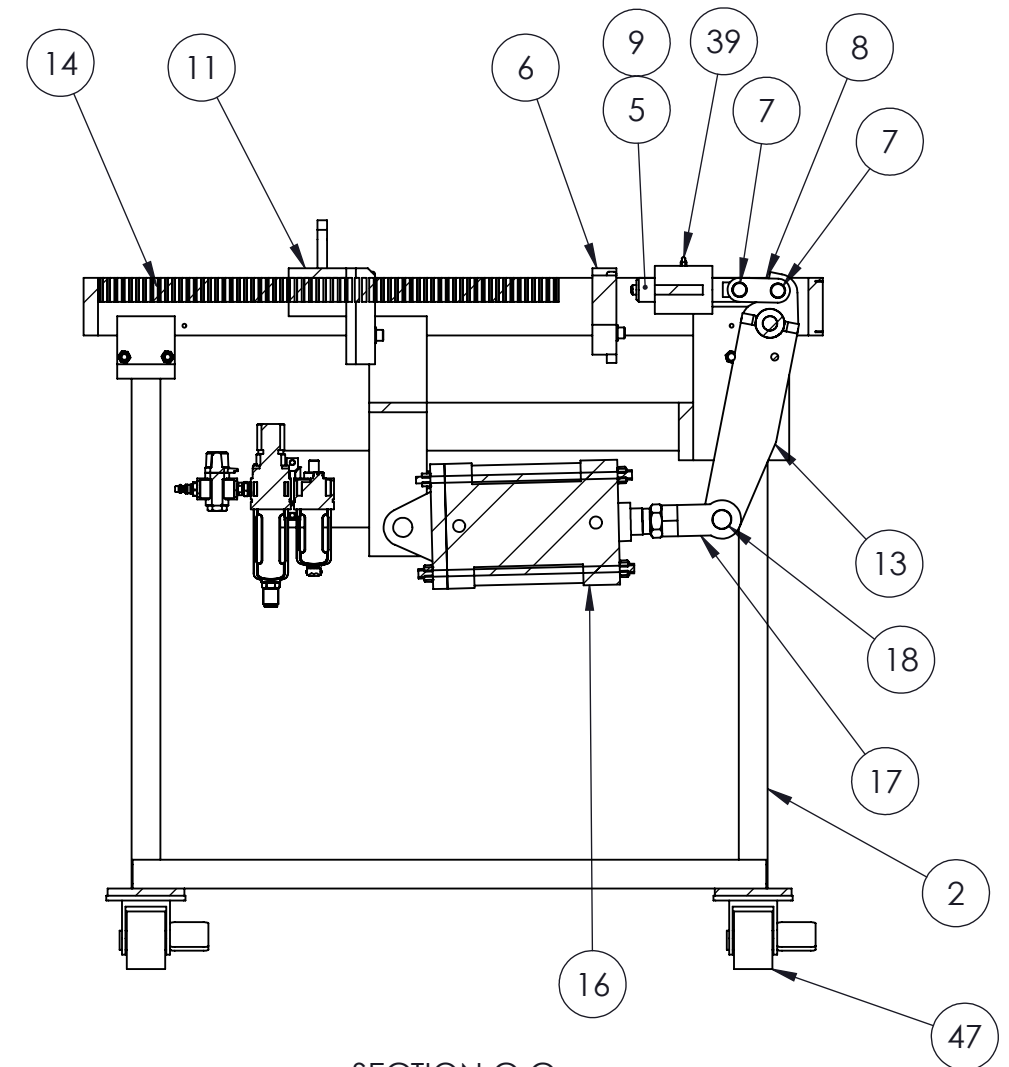
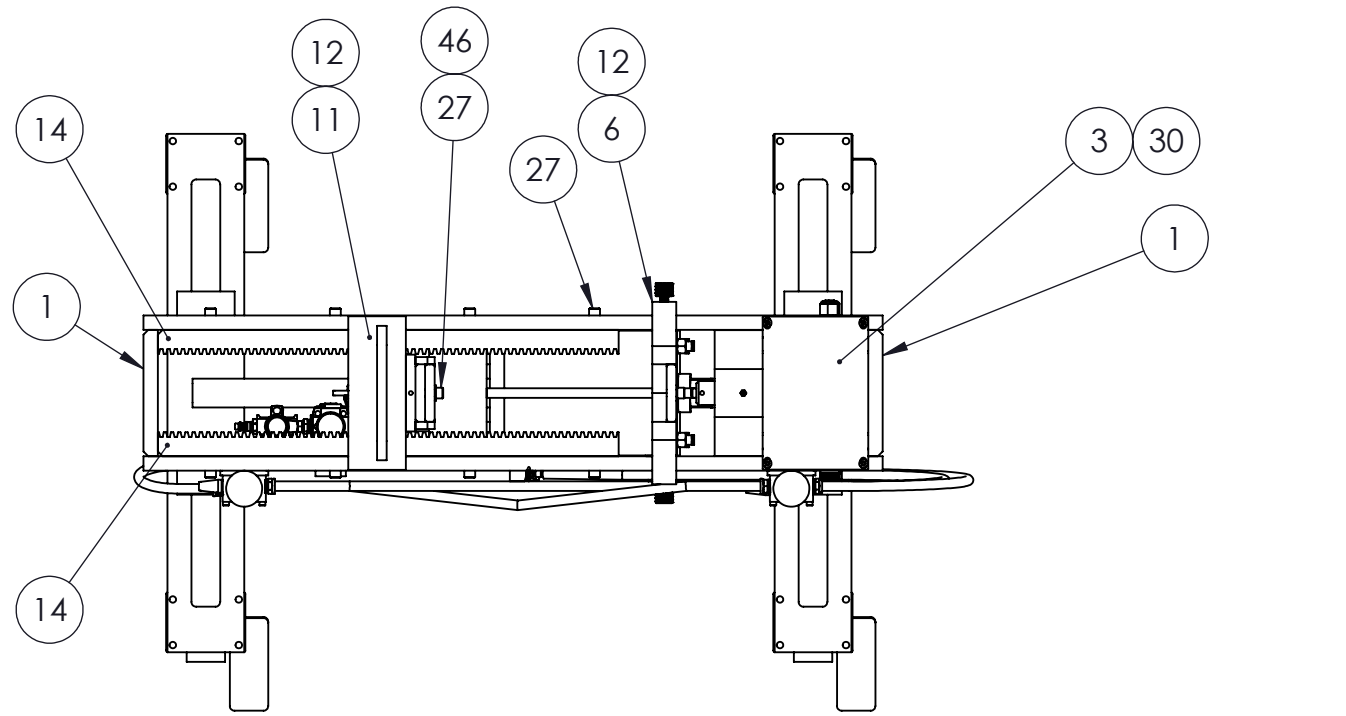
Tolerance unless noted .000 ±.005 .00 ±.01 Fract ±1/16	Manufacturing Solutions, Inc. 9485 College St, Beaumont, Texas
---	---

**ASSEMBLY, MARKMATE
36" TALL, WITH CASTERS**

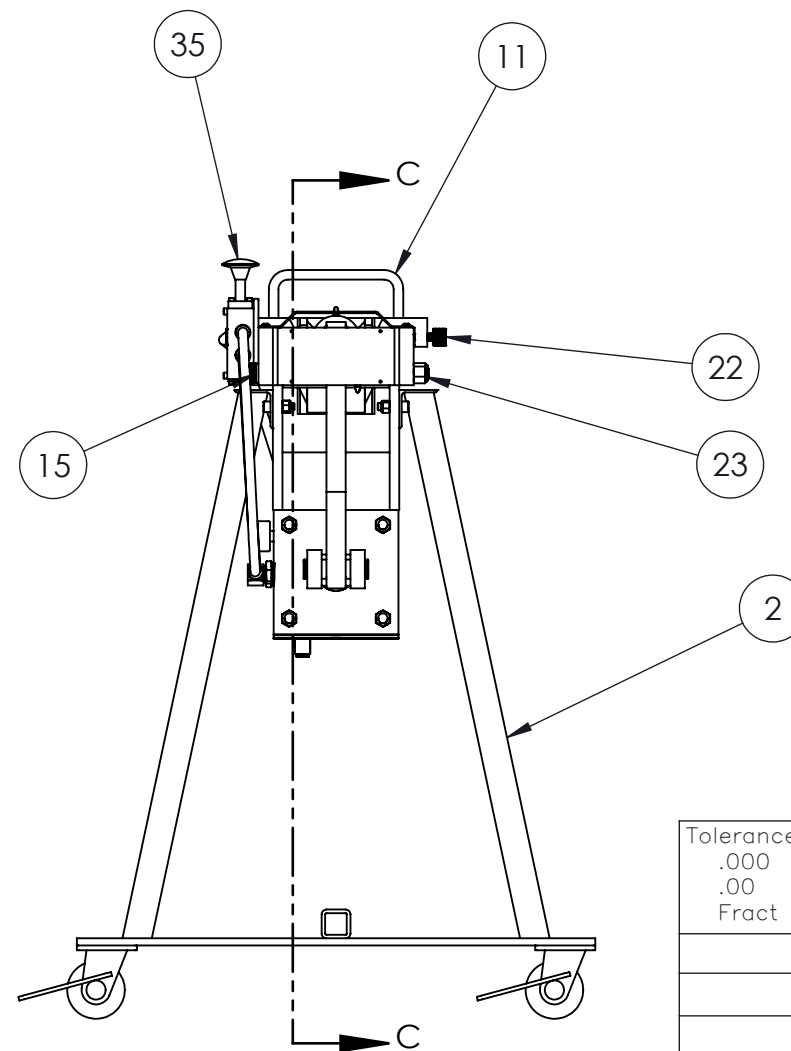
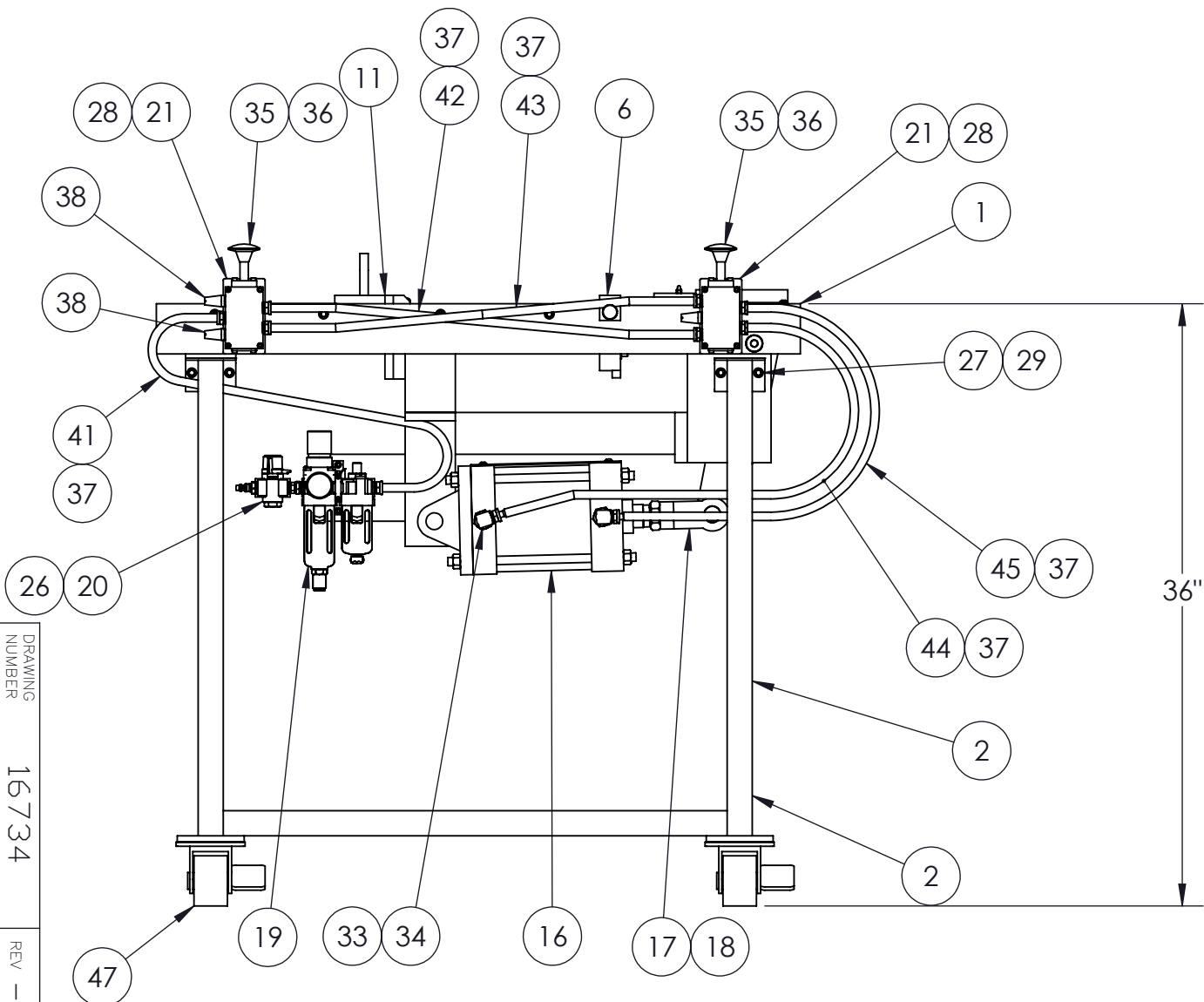
DRAWING SIZE B	SCALE 1:8	SHEET 1 of 2	DO NOT SCALE DRAWING	ALL DIMENSIONS IN INCHES
DRAWN BY JC	APPR BY	DATE 10/28/15	DRAWING NUMBER 16734	REV -

THIS PRINT IS THE PROPERTY OF MANUFACTURING SOLUTIONS, INC. THE INFORMATION CONTAINED HEREIN IS CONFIDENTIAL AND MAY NOT BE USED, DIVULGED, COPIED, NOR REPRODUCED WITHOUT THE EXPRESS WRITTEN PERMISSION OF MANUFACTURING SOLUTIONS, INC.

DRAWING NUMBER 16734 REV -



SECTION C-C



Tolerance unless noted	Manufacturing Solutions, Inc.	
.000 ±.005	9485 College St, Beaumont, Texas	
.00 ±.01		
Fract ±1/16		

ASSEMBLY, MARKMATE
36" TALL, WITH CASTERS

THIS PRINT IS THE PROPERTY OF MANUFACTURING SOLUTIONS, INC. THE INFORMATION CONTAINED HEREIN IS CONFIDENTIAL AND MAY NOT BE USED, DIVULGED, COPIED, NOR REPRODUCED WITHOUT THE EXPRESS WRITTEN PERMISSION OF MANUFACTURING SOLUTIONS, INC.

DRAWING SIZE B	SCALE 1:10	SHEET 2 of 2	DO NOT SCALE DRAWING	ALL DIMENSIONS IN INCHES
DRAWN BY JC	APPR BY	DATE 10/28/15	DRAWING NUMBER 16734	REV -

DRAWING NUMBER 16734 REV -